

PLATING SPECIFICATIONS		
	CONTACT	TERMINAL
A	.000015" GOLD	.0001" TIN/LEAD
D	.00003" GOLD	.00003" GOLD OVERALL
G	.00001" GOLD	.000005" GOLD
M	.00003" GOLD	.00001" GOLD OVERALL
N	.00005" GOLD	.0001" TIN/LEAD
O	.00003" GOLD	.0001" TIN/LEAD
P	GOLD FLASH	GOLD FLASH
R	.00002" GOLD	.0001" TIN/LEAD
S	.00001" GOLD	.00001" GOLD OVERALL
T	.0001" TIN/LEAD	.0001" TIN/LEAD OVERALL
V	.00003" GOLD	.000005" GOLD
W	GOLD FLASH	.0001" TIN/LEAD
X	.00003" GOLD	.0001" TIN/LEAD
Y	.00003" GOLD	.000005" GOLD
Z	.00001" GOLD	.0001" TIN/LEAD

SAMPLE PART NUMBER

RZE30DHRD

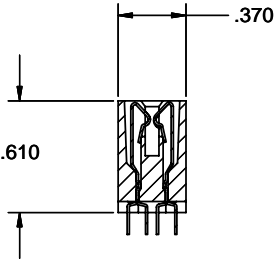
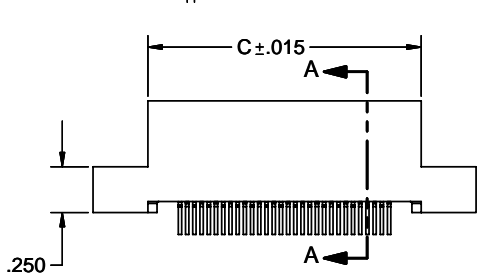
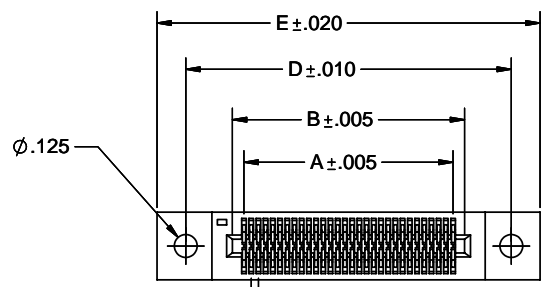
PLATING
(SEE TABLE)

MOUNTING STYLE
(SEE PAGE #2)

TERMINATION TYPE
(SEE PAGE #2)

	A	B	C	D	E	POSITIONS
R_E05DH__	0.157	0.283	0.507	0.793	1.107	5
R_E10DH__	0.354	0.480	0.704	0.990	1.304	10
R_E15DH__	0.551	0.677	0.901	1.187	1.501	15
R_E20DH__	0.748	0.874	1.098	1.384	1.698	20
R_E25DH__	0.945	1.071	1.295	1.581	1.895	25
R_E30DH__	1.142	1.268	1.492	1.778	2.092	30
R_E32DH__	1.220	1.346	1.570	1.856	2.170	32
R_E35DH__	1.465	1.465	1.689	1.975	2.289	35
R_E40DH__	1.535	1.661	1.885	2.171	2.485	40
R_E45DH__	1.732	1.858	2.082	2.368	2.682	45

30 POSITION BODY USED AS EXAMPLE ONLY.



**SECTION A-A
SCALE 2 : 1**

NOTES:

- THIS SPECIFICATION COVERS THE REQUIREMENT FOR DUAL EDGE CARD CONNECTORS.
- INSULATOR MATERIAL: POLYPHENYLENE SULFIDE.
- CONTACT MATERIAL: PHOSPHOR BRONZE.
- PLATING: SEE PLATING SPEC. TABLE AND SAMPLE PART NUMBER
- TEMPERATURE: -65°C TO 125°C
- UL FLAMMABILITY RATING: 94V-0
- VOLTAGE RATING: 125 VDC MINIMUM AT SEA LEVEL.
- CURRENT RATING: 1 AMP
- VOLTAGE DROP: 30 MILLI VOLT AT RATED CURRENT
- INSULATION RESISTANCE: 1000 MEGA OHM
- CONNECTOR IDENTIFICATION: THE PART SHALL BE MARKED WITH A PART NUMBER AND DATE CODE.
- BOARD THICKNESS ACCOMMODATED: .054/.070
- BOARD INSERTION FORCE: 6 OUNCE AVERAGE PER CONTACT PAIR USING .062 PCB
- BOARD WITHDRAWAL FORCE: 1 OUNCE MINIMUM PER CONTACT PAIR USING .062 PCB
- TOLERANCE: ±.010" UNLESS OTHERWISE NOTED.

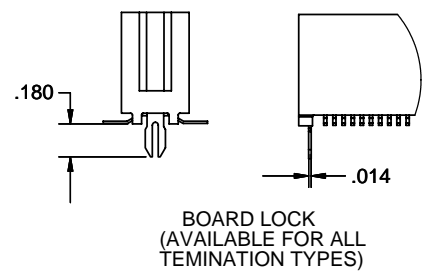
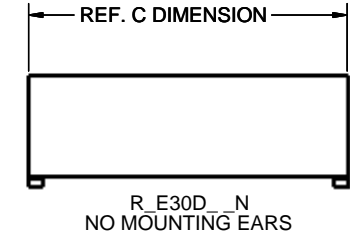
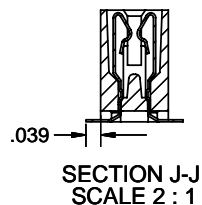
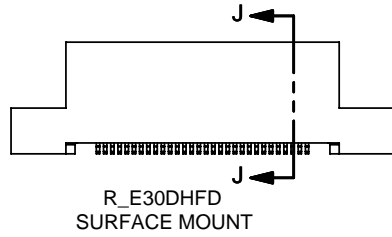
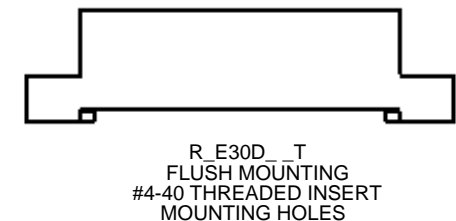
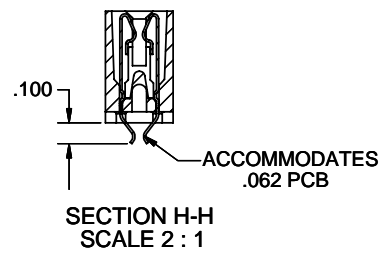
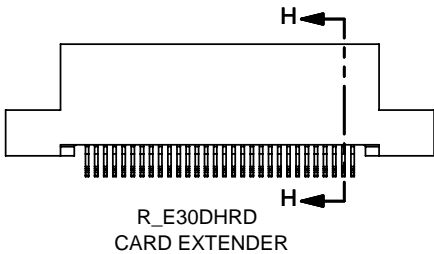
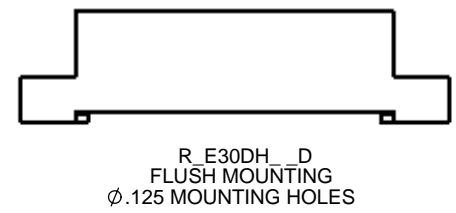
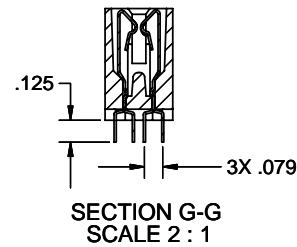
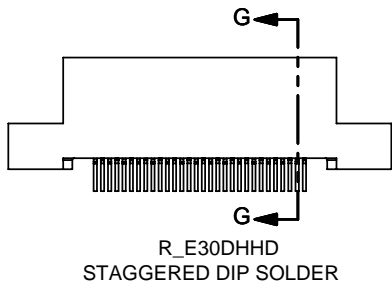
COMPUTER GENERATED DOCUMENT DO NOT CHANGE MANUALLY

PROPRIETARY AND CONFIDENTIAL
THIS DRAWING AND DESIGN IS THE PROPERTY OF SULLINS ELECTRONICS. IT MAY NOT BE USED FOR ANY PURPOSE OTHER THAN BY THE OWNER. SULLINS ELECTRONICS DOES NOT AUTHORIZE THE REPRODUCTION OR CONVEYANCE OF ANY INFORMATION CONTAINED HEREIN.

REV.	ECO NO.	DESCRIPTION	DATE	BY	APPV'D
A	101	ORIGINAL RELEASE	11/24/03	JFW	AJT
		UNLESS OTHERWISE SPECIFIED: DIMENSIONS ARE IN INCHES TOLERANCES: FRACTIONAL: 1/32 ANGULAR: ±1° TWO PLACE DECIMAL: ±.02 THREE PLACE DECIMAL: ±.005 FOUR PLACE DECIMAL: ±.0005 INTERPRET GEOMETRIC TOLERANCING PER: MATERIAL: NOTED FINISH: N/A			
		DRAWN: 11/25/03 CHECKED: 11/25/03 NAME: JWHITE AJT			
		COMMENTS:			
		APPLICATION: DO NOT SCALE DRAWING			

SULLINS ELECTRONICS
PART NO./DESCRIPTION:
HH, HF, HR TERMINATIONS
R_E__DH__

SIZE	DWG. NO.	REV
C	10092	A
SCALE: 4:1		SHEET 1 OF 2



COMPUTER
GENERATED
DOCUMENT
DO NOT CHANGE
MANUALLY

PROPRIETARY AND CONFIDENTIAL
THIS DRAWING AND DESIGN IS THE
PROPERTY OF SULLINS ELECTRONICS.
IT MAY NOT BE USED FOR ANY
PURPOSE OTHER THAN BY THE OWNER.
SULLINS ELECTRONICS DOES NOT
AUTHORIZE THE REPRODUCTION OR
CONVEYANCE OF ANY INFORMATION
CONTAINED HEREIN.

UNLESS OTHERWISE SPECIFIED:		DATE	NAME	SULLINS ELECTRONICS
DIMENSIONS ARE IN INCHES		11/25/03	JWHITE	
TOLERANCES:				PART NO./DESCRIPTION R_E__DH__
FRACTIONAL: 1/32				
ANGULAR: ±1°				
TWO PLACE DECIMAL: ±.02				SIZE DWG. NO. REV C 10092 A
THREE PLACE DECIMAL: ±.005				
INTERPRET GEOMETRIC TOLERANCING PER:				SCALE: 1:1 WEIGHT: SHEET 2 OF 2
MATERIAL	N/A			
FINISH	N/A			
DO NOT SCALE DRAWING				